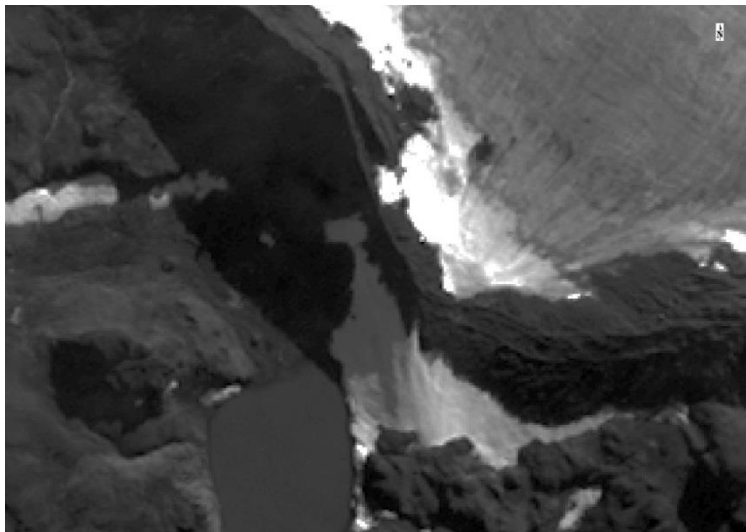
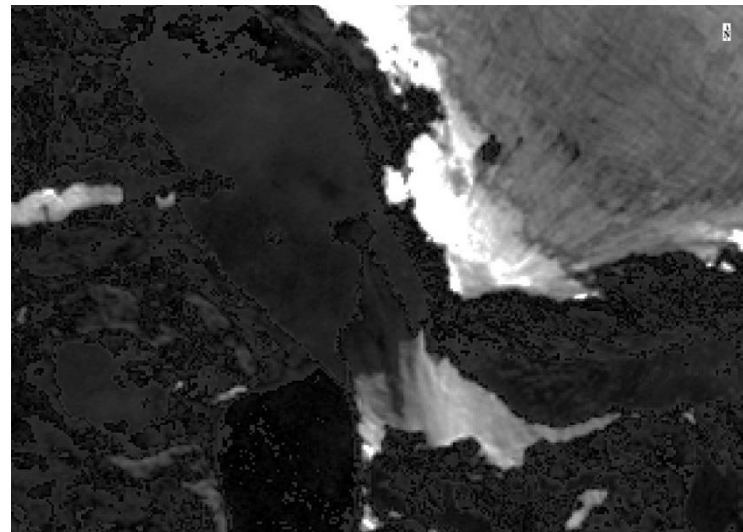


WorldView2 band 5 (red)



Atmospheric correction with 6S algorithm (i.atcorr)



Parameters used in 6S algorithm (i.atcorr)

```
16
4 11 17.12 -58.948477 -62.163658
2
2
20
-0.050
-1000
106
```

```
: worldview2
: mm dd hh.ddd long lat
: atmospheric mode=midlatitudesummer
: aerosols model=maritime
: visibility [km]
: mean elevation asl [km]
: sensor on board a satellite
: Red band (5) of worldview2
```