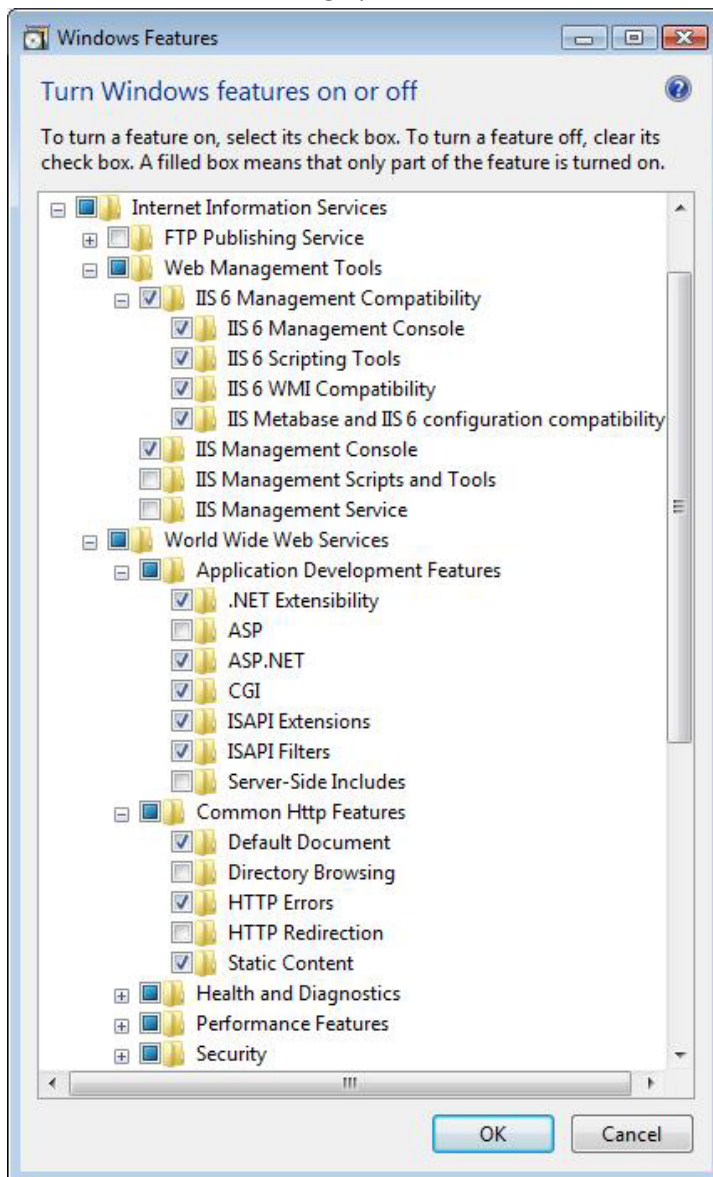


# Installing MapGuide OpenSource 2.0 Web Server Extensions on Vista Enterprise with IIS 7

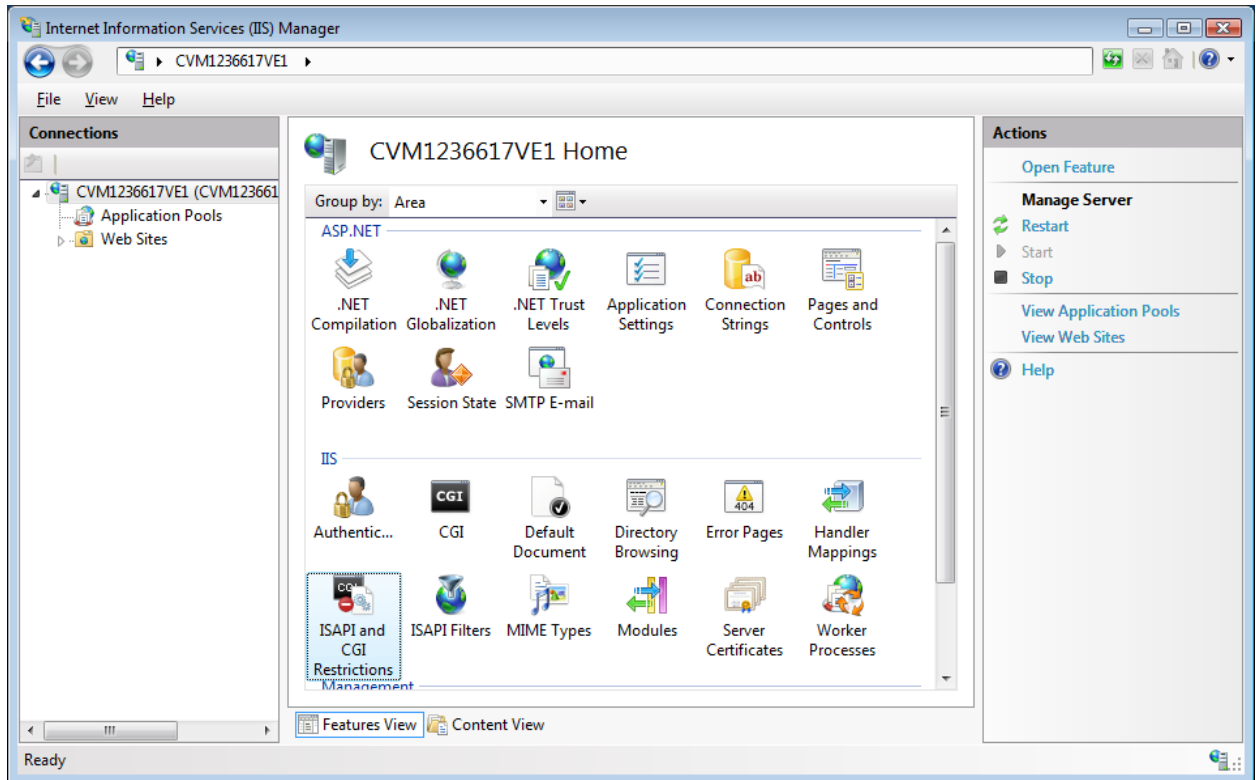
---

Starting from a fresh install of Windows Vista Enterprise, Internet Information Services 7 will not be installed by default. IIS will need to be installed before installing the Web Tier.

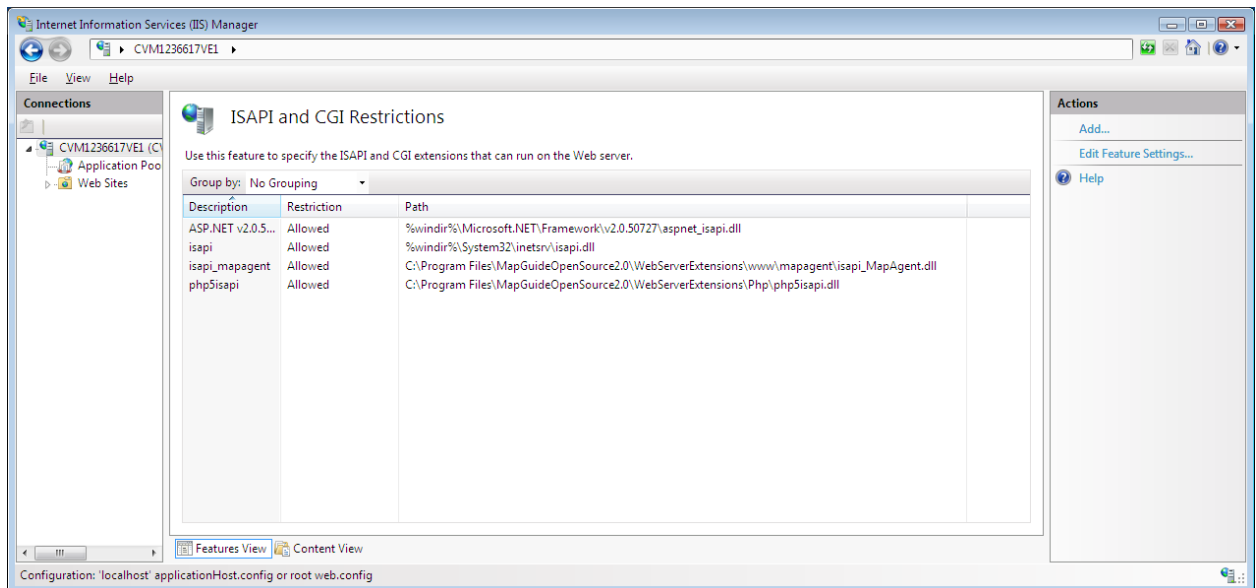
1. Start→Control Panel→Programs and Features.
2. Select Turn Windows feature on or off.
3. Install IIS with the following options:



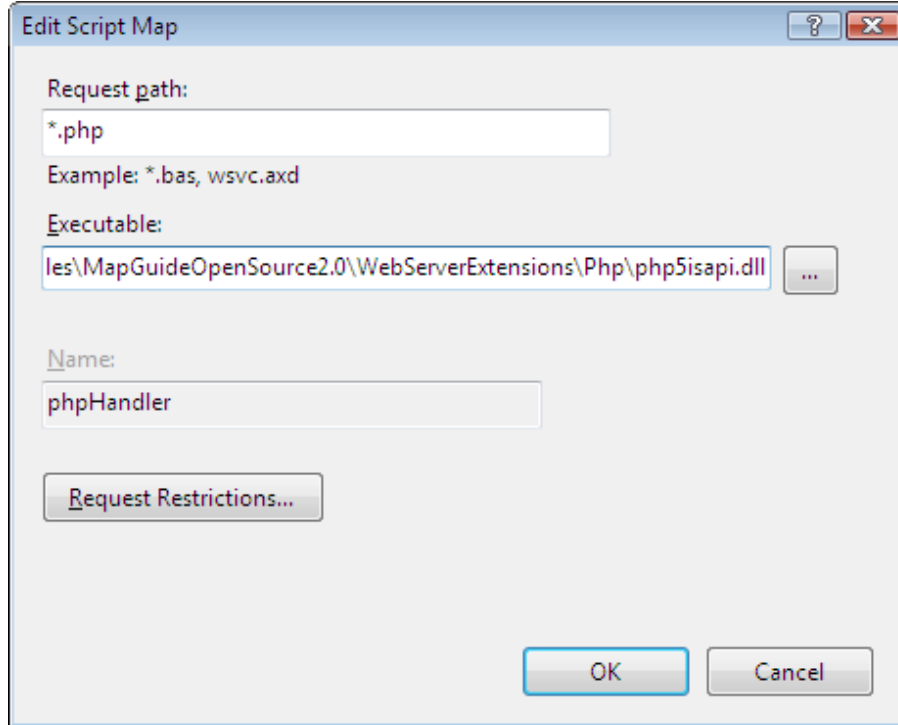
4. Install MapGuide Web Server Extensions.
5. Open IIS Manager from Start menu → Administrative Tools → IIS Manager.
6. Select ISAPI and CGI Restrictions from the root level.



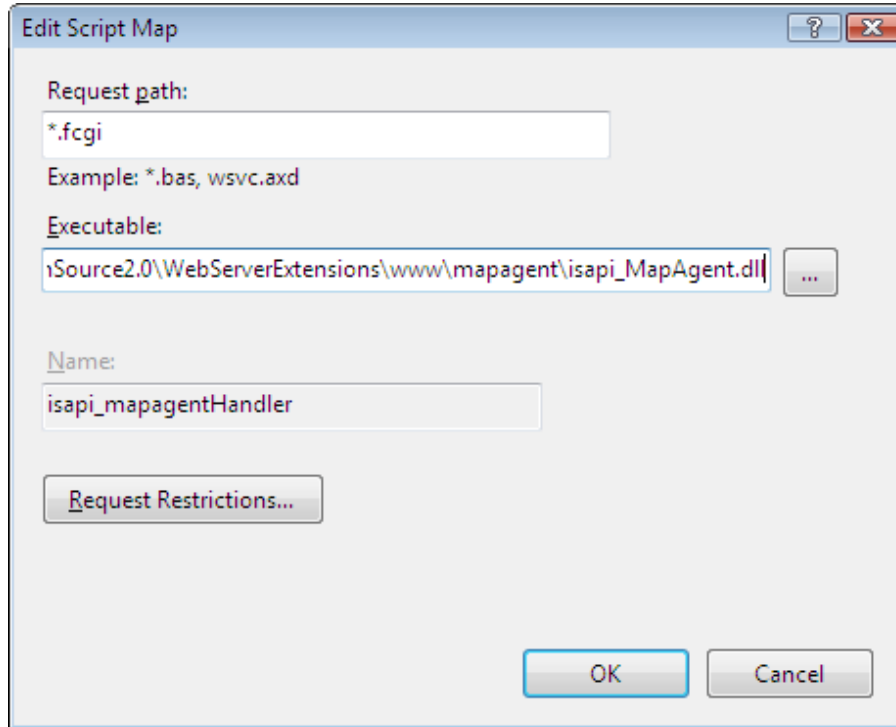
7. Add the following as Allowed:



8. Navigate to the mapguide virtual directory.
9. Click Handler Mappings and add the following Script Map:



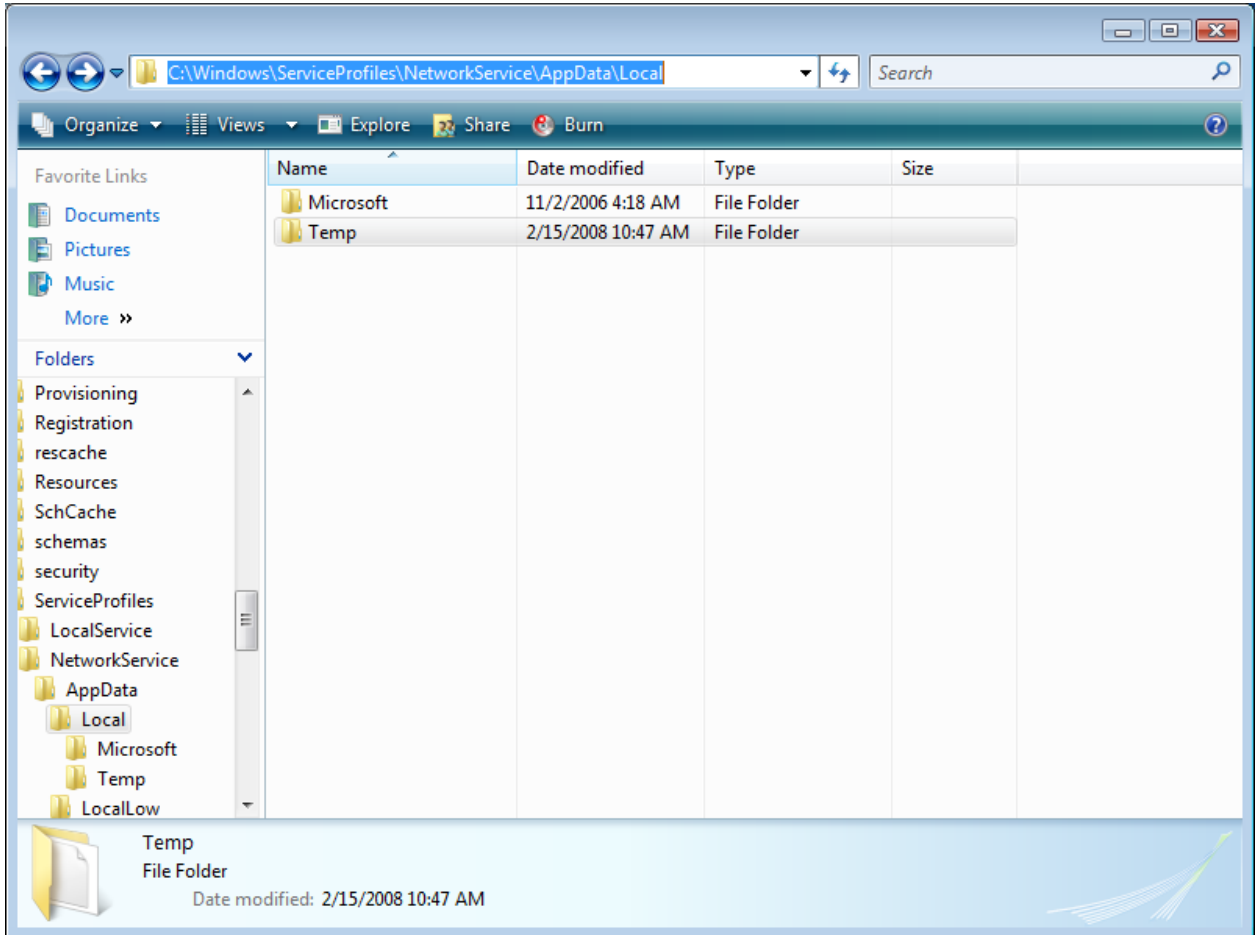
10. Navigate to mapagent virtual directory.
11. Click Handler Mappings and add the following Script Map:



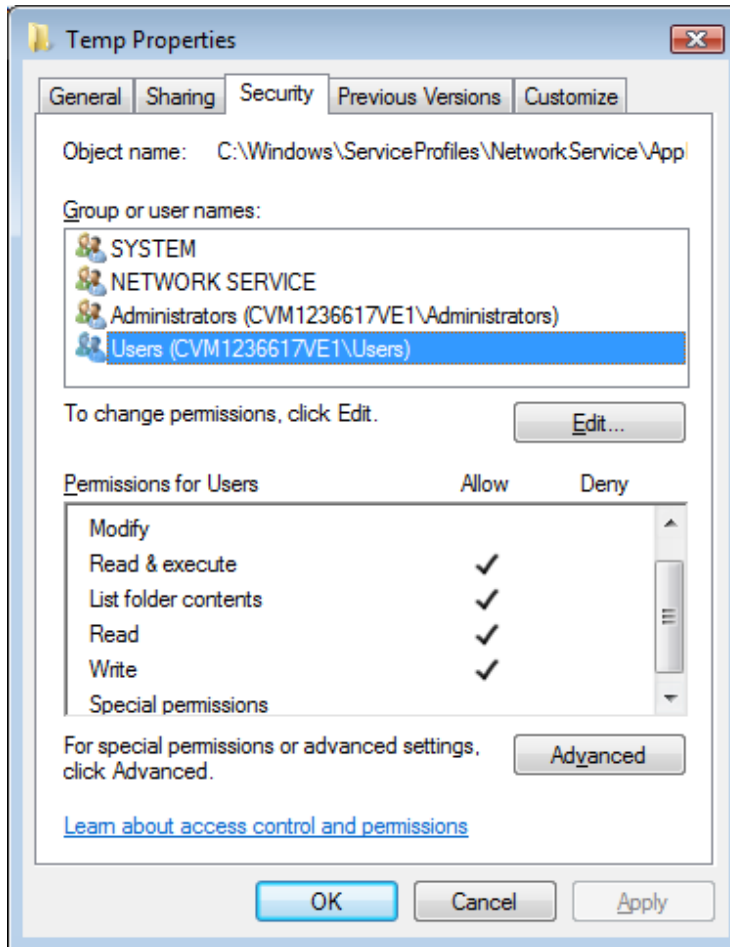
12. Exit Internet Information Services Manager.
13. Control Panel → Folder Options → View Tab – Change settings to show all hidden files and folders.

14. Navigate to

C:\Windows\ServiceProfiles\NetworkService\AppData\Local\Temp.



15. Add permissions to Users accounts as follows:



16. IIS 7 should now be setup for MapGuide OpenSource 2.0 Web Server Extension.